

Highlights



Population Growth: The population of Murrieta more than doubled over the last decade from 44,000 to 103,000. Population gains were broad based with large gains occurring in the white, non-Hispanic population (26,000) and in the Hispanic population (19,000). The population increased across all ages, with especially large gains among the working-age population (35,000) and in the young population (19,000).

Diversity: The population mix has shifted dramatically over the past ten years with the majority white, non-Hispanic share falling from 72% to 56% and the Hispanic share increasing from 17% to 26%. The black share increased from 3% to 5% and the Asian share from 4% to 9%.

Age Structure: The population in Murrieta is younger than in California overall, and the age structure shifted downward over the past ten years in contrast to the statewide aging trend. Median age decreased from 34 to 33, compared with the statewide median of 35, and the share of the population age 65+ declined from 11% to 10%, compared with the statewide figure of 11%.

Households Family households, at 79% of total, are much more common in Murrieta than statewide (69%) and traditional families—married couples with children—account for 35% of all households, compared with 23% statewide.

Income: Median household income is \$80,000, 32% higher than the California median.



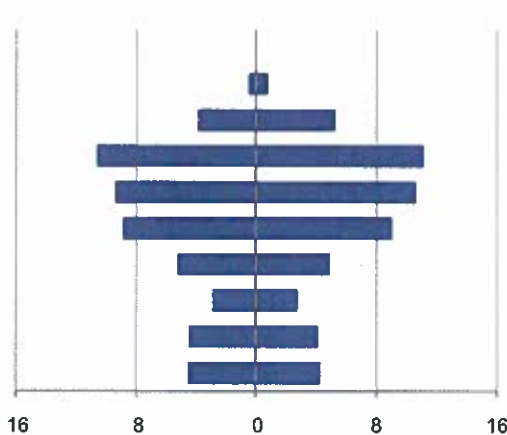
Population by Age

This demographic profile is part of a series of library jurisdiction profiles prepared for the California State Library by the Stanford Center on Longevity. The project, "Understanding California's Shifting Demographics," was supported in whole by the U.S. Institute of Museum and Library Services under the provisions of the Library Services and Technology Act, administered in California by the State Librarian. The opinions expressed herein do not necessarily reflect the position or policy of the U.S. Institute of Museum and Library Services or the California State Library, and no official endorsement by the U.S. Institute of Museum and Library Services or the California State Library should be inferred.

Key Indicators			
		2000	2010
Population Growth			
	Total population	44,282	103,466
	10-year growth	#N/A	133.7%
Diversity			
	% Hispanic	17.5%	25.9%
	% Asian, non-Hispanic	3.9%	9.0%
	% White, non-Hispanic	71.8%	55.7%
	% Black, non-Hispanic	3.2%	5.0%
Aging			
	% 65+	11.4%	10.1%
	Median age	34.4	33.4
Households			
	% Married couple with children	41.0%	34.7%
	% Living alone	14.3%	15.9%

1. Population by Library-Defined Age Group, 2010

In thousands; males on left, females on right

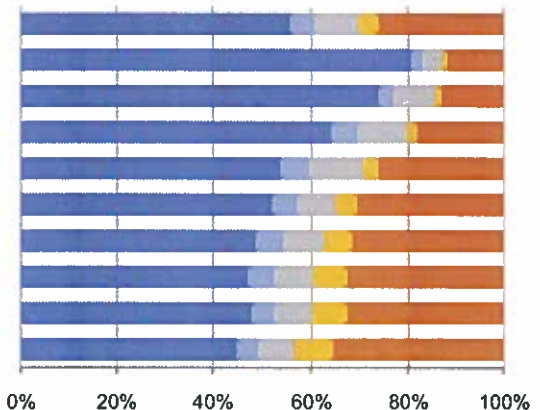


2. Race and Ethnicity by Library-Defined Age Group, 2010

White,NH Black,NH Asian,NH Other,NH Hispanic

Age group

Total
85+, Oldest
65 to 84, Older adults
46 to 64, Midlife
33 to 45, Adult
19 to 32, Young
14 to 18, Teens
11 to 13, Tweens
6 to 10, School age
0 to 5, Infants/toddlers

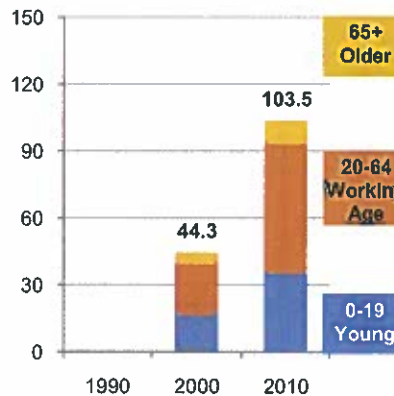


3. Population Growth by Library-Defined Age Group, 2000-10

	2010	Change	% Change
Total	103,466	59,184	133.7%
85+	1,263	920	268.2%
65 to 84	9,142	4,422	93.7%
46 to 64	21,820	14,704	206.6%
33 to 45	20,024	9,144	84.0%
19 to 32	17,944	12,226	213.8%
14 to 18	10,119	6,417	173.3%
11 to 13	5,689	2,861	101.2%
6 to 10	8,626	3,870	81.4%
0 to 5	8,839	4,620	109.5%

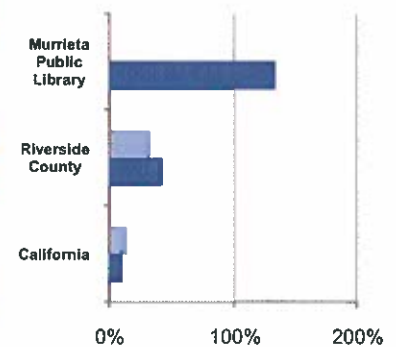
4. Population Total, 1990-2010

In thousands



5. 10-Year Population Change

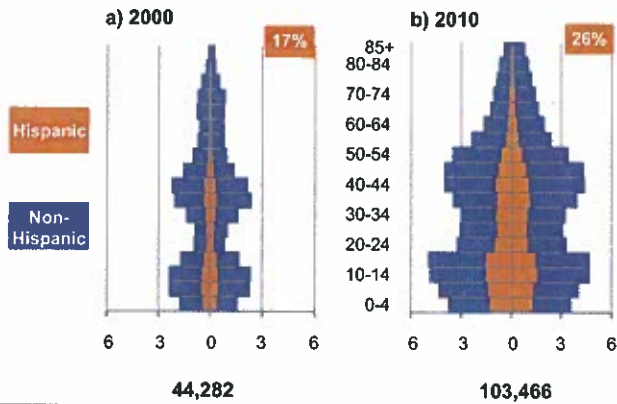
1990-2000 2000-2010



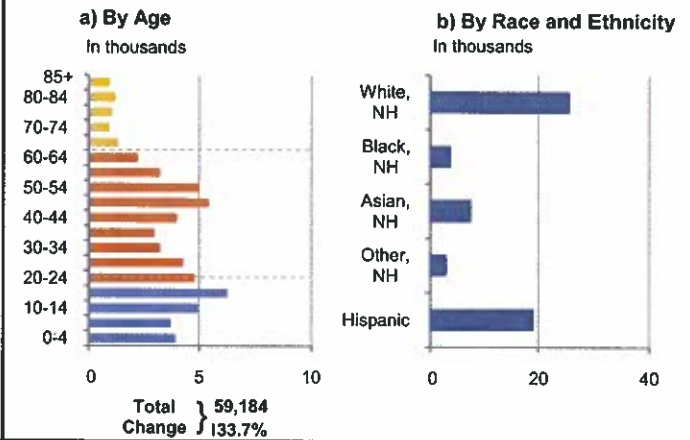
Source: US Census 2010, 2000, or 1990

6. Population by 5-Year Age Brackets

In thousands; males on left, females on right

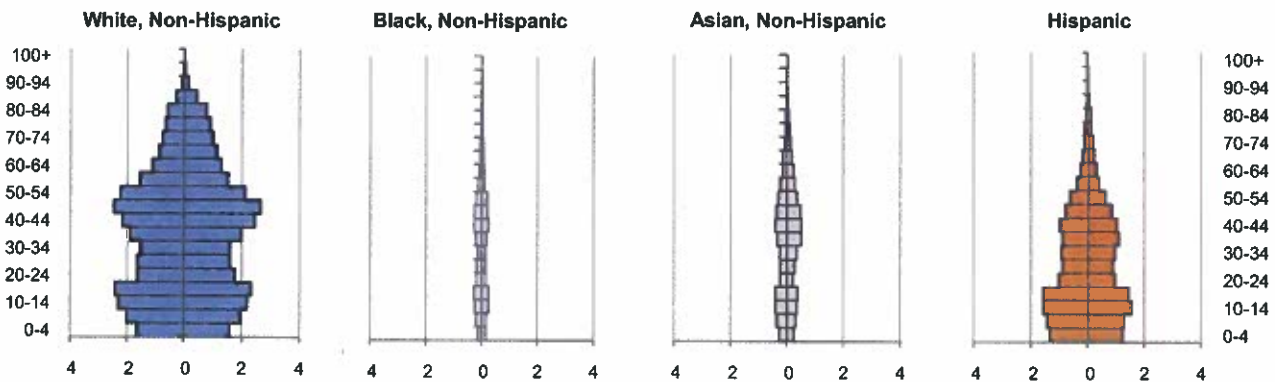


7. 10-Year Change in Population, 2000-10



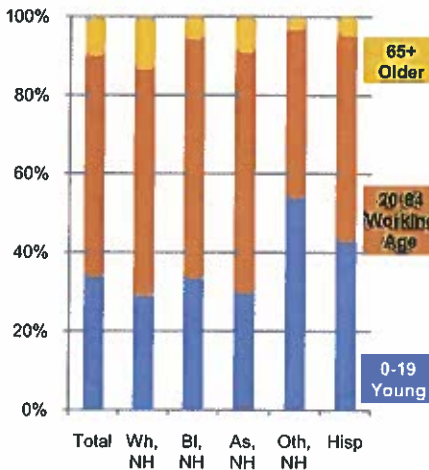
8. Population by Age, Race, and Ethnicity, 2010

In thousands; males on left, females on right

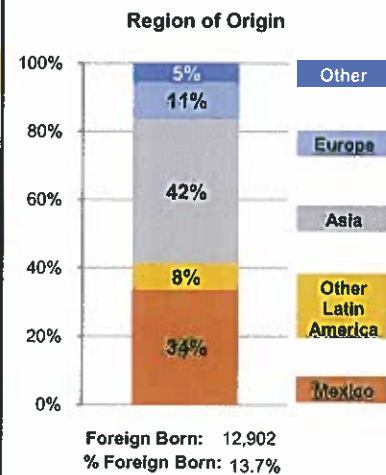


	White, NH	Black, NH	Asian, NH	Hispanic	Total*
Population	57,590	5,162	9,304	26,792	103,466
Share of Total	55.7%	5.0%	9.0%	25.9%	100.0%
% 65+	13.5%	5.8%	9.2%	4.9%	10.1%
% 20-64	57.9%	61.1%	61.3%	52.4%	56.3%
% under 5	5.6%	6.0%	5.6%	9.7%	7.0%

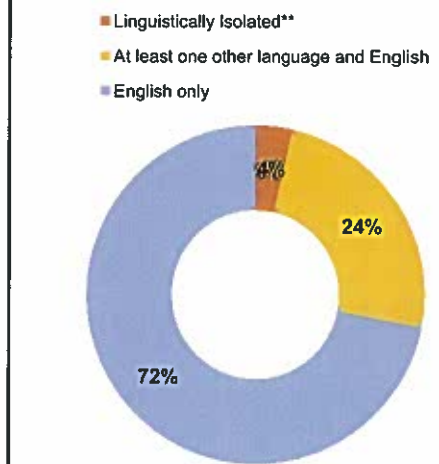
9. Age Mix by Race and Ethnicity, 2010



10. Foreign Born, 2005-09



11. Household Language, 2005-09



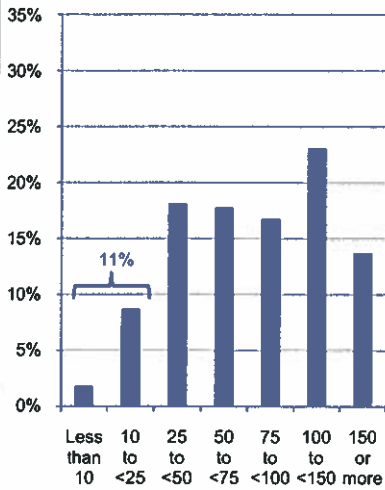
Wh=White; Bl=Black; As=Asian; Oth=Other Race or Two or More Races; Hisp=Hispanic; NH=Non-Hispanic; ACS=American Community Survey 2005-09

*See pages 5-6 for detail on Other, Non-Hispanic

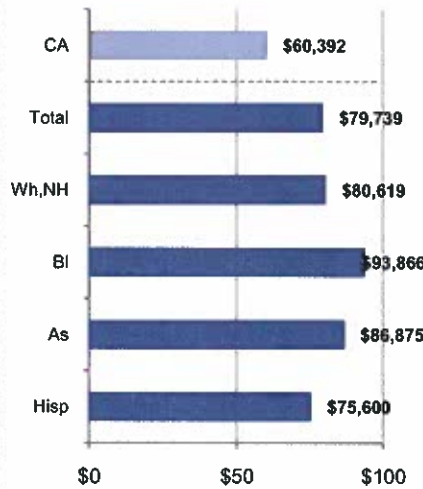
**Linguistically Isolated = No one in the household age 14 and over speaks English at least "very well"

12. Household Income, 2005-09
In thousands of \$ (2009)

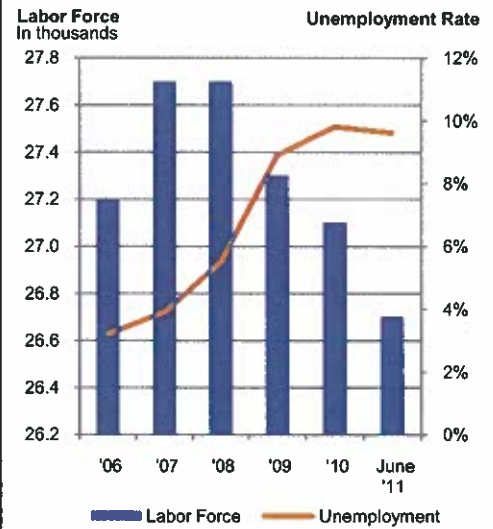
a) Income Distribution



b) Median Household Income by Race and Ethnicity*



13. Labor Force and Unemployment, 2006-11

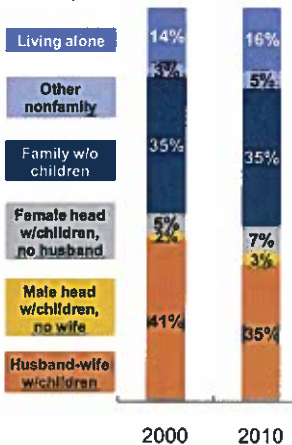


Source: ACS 2005-09

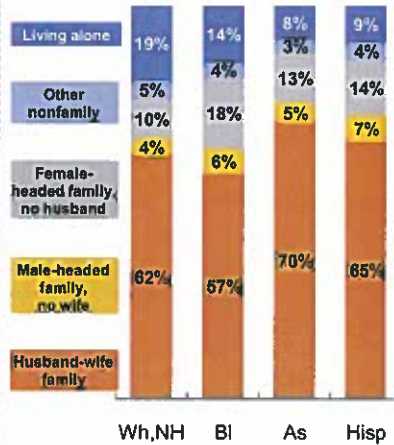
Source: CA Employment Development Department

14. Household Type, 2010
% of all households

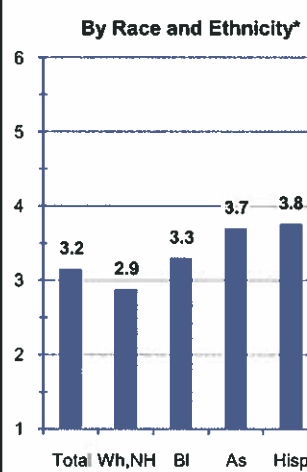
a) Total, 2000-10



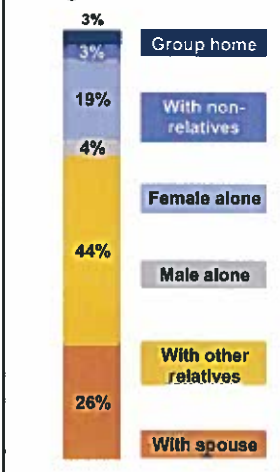
b) By Race and Ethnicity,* 2010



15. Average Household Size, 2010
By Race and Ethnicity*



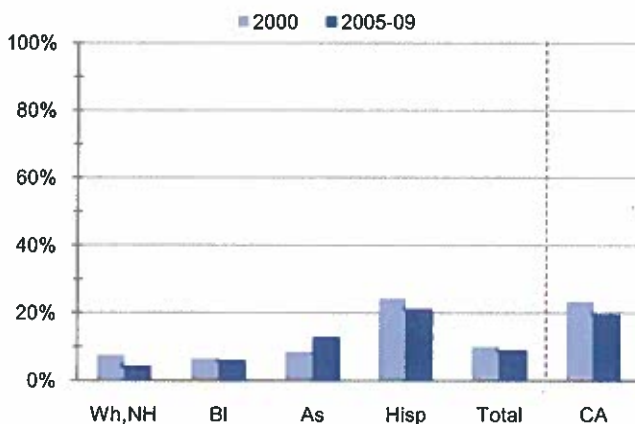
16. Living Arrangements Age 65+, 2005-09



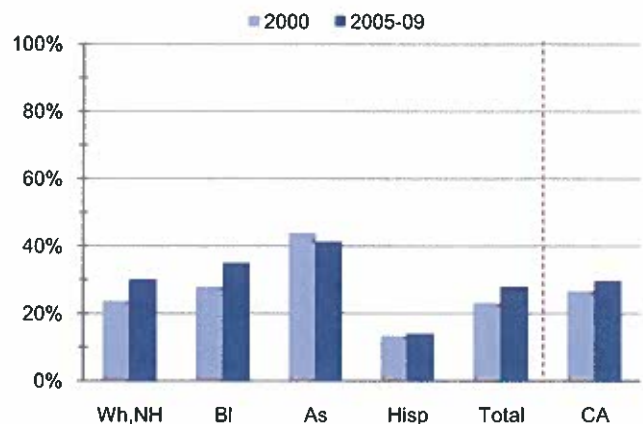
Source: ACS 2005-09

17. Educational Attainment for the Population Age 25 and Over by Race and Ethnicity*

a) % of Adults Who Did Not Complete High School



b) % of Adults Who Attained a BA or Higher



Source: Census 2000, ACS 2005-09

*Wh,NH=White,Non-Hispanic; BI=Black,Hispanic inclusive; As=Asian,Hispanic Inclusive; Hisp=Hispanic(Includes all races); CA=California Total

Note: In the American Community Survey and for Census variables other than population, Hispanic origin is not broken out for all races.

	White, Non-Hispanic	Black, Non-Hispanic	Asian, Non-Hispanic	Other, Non-Hispanic	Detail for Other, Non-Hispanic				Hispanic or Latino	Total Population
					American Indian & Alaska Native	Native Hawaiian & Pacific Islander	Some Other Race	Two or More Races		
A. Total Population										
2000 Total	31,811	1,401	1,718	1,613	190	92	67	1,264	7,739	44,282
2000 % of Total	71.8%	3.2%	3.9%	3.6%	0.4%	0.2%	0.2%	2.9%	17.5%	100.0%
2010 Total	57,590	5,162	9,304	4,618	389	332	156	3,741	26,792	103,466
2010 % of Total	55.7%	5.0%	9.0%	4.5%	0.4%	0.3%	0.2%	3.6%	25.9%	100.0%
B. Population in Major Age Groups by Race and Ethnicity										
2000										
0-19	10,598	523	528	875	57	30	36	752	3,498	16,022
20-64	16,852	806	1,046	676	123	60	29	464	3,817	23,197
65+	4,361	72	144	62	10	2	2	48	424	5,063
85+	294	7	6	7	1	0	0	6	29	343
2010										
0-19	16,476	1,707	2,740	2,479	100	94	69	2,216	11,444	34,846
20-64	33,332	3,156	5,708	1,981	250	216	76	1,439	14,038	58,215
65+	7,782	299	856	158	39	22	11	86	1,310	10,405
85+	1,020	28	54	15	4	1	0	10	146	1,263
C. Age Mix for Each Racial and Ethnic Group										
2000										
0-19	33.3%	37.3%	30.7%	54.2%	30.0%	32.6%	53.7%	59.5%	45.2%	36.2%
20-64	53.0%	57.5%	60.9%	41.9%	64.7%	65.2%	43.3%	36.7%	49.3%	52.4%
65+	13.7%	5.1%	8.4%	3.8%	5.3%	2.2%	3.0%	3.8%	5.5%	11.4%
85+	0.9%	0.5%	0.3%	0.4%	0.5%	0.0%	0.0%	0.5%	0.4%	0.8%
2010										
0-19	28.6%	33.1%	29.4%	53.7%	25.7%	28.3%	44.2%	59.2%	42.7%	33.7%
20-64	57.9%	61.1%	61.3%	42.9%	64.3%	65.1%	48.7%	38.5%	52.4%	56.3%
65+	13.5%	5.8%	9.2%	3.4%	10.0%	6.6%	7.1%	2.3%	4.9%	10.1%
85+	1.8%	0.5%	0.6%	0.3%	1.0%	0.3%	0.0%	0.3%	0.5%	1.2%
D. Racial and Ethnic Mix for Each Age Group										
2000										
0-19	66.1%	3.3%	3.3%	5.5%	0.4%	0.2%	0.2%	4.7%	21.8%	100.0%
20-64	72.6%	3.5%	4.5%	2.9%	0.5%	0.3%	0.1%	2.0%	16.5%	100.0%
65+	86.1%	1.4%	2.8%	1.2%	0.2%	0.0%	0.0%	0.9%	8.4%	100.0%
85+	85.7%	2.0%	1.7%	2.0%	0.3%	0.0%	0.0%	1.7%	8.5%	100.0%
2010										
0-19	47.3%	4.9%	7.9%	7.1%	0.3%	0.3%	0.2%	6.4%	32.8%	100.0%
20-64	57.3%	5.4%	9.8%	3.4%	0.4%	0.4%	0.1%	2.5%	24.1%	100.0%
65+	74.8%	2.9%	8.2%	1.5%	0.4%	0.2%	0.1%	0.8%	12.6%	100.0%
85+	80.8%	2.2%	4.3%	1.2%	0.3%	0.1%	0.0%	0.8%	11.6%	100.0%
E. Population Growth										
2000-10, Change										
0-19	5,878	1,184	2,212	1,604	43	64	33	1,464	7,946	18,824
20-64	16,480	2,350	4,662	1,305	127	156	47	975	10,221	35,018
65+	3,421	227	712	96	29	20	9	38	886	5,342
85+	726	21	48	8	3	1	0	4	117	920
Total	25,779	3,761	7,586	3,005	199	240	89	2,477	19,053	59,184
2000-10, % Change										
0-19	55.5%	226.4%	418.9%	183.3%	75.4%	213.3%	91.7%	194.7%	227.2%	117.5%
20-64	97.8%	291.6%	445.7%	193.0%	103.3%	260.0%	162.1%	210.1%	267.8%	151.0%
65+	78.4%	315.3%	494.4%	154.8%	290.0%	1000.0%	450.0%	79.2%	209.0%	105.5%
85+	246.9%	300.0%	800.0%	114.3%	300.0%	N/A	N/A	66.7%	403.4%	268.2%
Total	81.0%	268.5%	441.6%	186.3%	104.7%	260.9%	132.8%	196.0%	246.2%	133.7%

Source: US Census 2010, 2000

	White, Non-Hispanic	Black, Non-Hispanic	Asian, Non-Hispanic	Other, Non-Hispanic	Detail for Other, Non-Hispanic				Hispanic or Latino	Total Population 2010
					American Indian & Alaska Native	Native Hawaiian & Pacific Islander	Some Other Race	Two or More Races		
F. Population by Library-Defined Age Groups, 2010										
0-5	3,965	370	646	740	40	20	10	670	3,118	8,839
6-10	4,123	397	680	625	23	22	18	562	2,801	8,626
11-13	2,680	296	457	414	18	18	14	364	1,842	5,689
14-18	4,923	567	846	608	16	29	23	540	3,175	10,119
19-32	9,343	910	1,386	851	90	63	29	669	5,454	17,944
33-45	10,771	1,142	2,220	685	83	87	29	486	5,206	20,024
46-64	14,003	1,181	2,213	537	80	71	22	364	3,886	21,820
65-84	6,762	271	802	143	35	21	11	76	1,164	9,142
85+	1,020	28	54	15	4	1	0	10	146	1,263
Total	57,590	5,162	9,304	4,618	389	332	156	3,741	26,792	103,466
G. Population by 5-Year Age Brackets, 2010										
0-4	3,242	309	519	615	36	17	8	554	2,592	7,277
5-9	3,984	371	658	615	24	19	18	554	2,721	8,349
10-14	4,501	499	766	681	25	28	20	608	3,120	9,567
15-19	4,749	528	797	568	15	30	23	500	3,011	9,653
20-24	3,428	345	428	321	35	27	10	249	1,994	6,516
25-29	3,250	317	497	265	32	20	8	205	1,809	6,138
30-34	3,150	282	605	258	28	24	9	197	1,902	6,197
35-39	3,897	393	855	275	30	25	14	206	2,009	7,429
40-44	4,613	530	927	275	41	43	11	180	2,035	8,380
45-49	5,128	481	851	208	21	24	9	154	1,651	8,319
50-54	4,363	407	665	191	31	27	9	124	1,268	6,894
55-59	3,085	232	508	109	17	10	4	78	784	4,718
60-64	2,418	169	372	79	15	16	2	46	586	3,624
65-69	2,020	100	315	58	15	6	6	31	407	2,900
70-74	1,787	91	220	34	9	5	2	18	329	2,461
75-79	1,596	46	161	33	8	8	2	15	236	2,072
80-84	1,359	34	106	18	3	2	1	12	192	1,709
85-89	725	21	37	11	2	1	0	8	98	892
90-94	235	4	12	2	1	0	0	1	35	288
95-99	57	3	3	2	1	0	0	1	12	77
100+	3	0	2	0	0	0	0	0	1	6
Total	57,590	5,162	9,304	4,618	389	332	156	3,741	26,792	103,466
H. Median Age, 2000-10										
	White, Non-Hispanic	Black, Hispanic Inclusive	Asian, Hispanic Inclusive		American Indian & Alaska Native, Hispanic Inclusive	Native Hawaiian & Pacific Islander, Hispanic Inclusive	Some Other Race, Hispanic Inclusive	Two or More Races, Hispanic Inclusive	Hispanic or Latino	Total Population
2000	36.6	32.4	36.1		30.7	33.8	24.9	14.9	24.0	34.4
2010	38.5	32.5	37.0		31.7	31.1	27.6	15.5	24.9	33.4

Source: US Census 2010, 2000

Note: In the American Community Survey and for Census variables other than population, Hispanic origin is not broken out for all races.

I. Income Distribution, 2005-09			J. Median Household Income by Race and Ethnicity, 2005-09 (\$2009)						
Range (ths)	Households	% of Total	White, NH	Black	Asian	Hispanic	Total	% of CA	California
<\$10	524	1.8%	\$80,619	\$93,866	\$86,875	\$75,600	\$79,739	132.0%	\$60,392
\$10 to <\$25	2,523	8.7%							
\$25 to <\$50	5,244	18.1%							
\$50 to <\$75	5,160	17.8%							
\$75 to <\$100	4,864	16.8%							
\$100 to <\$150	6,687	23.1%							
\$150+	3,976	13.7%							
K. Household Type, 2000-10			2000	2000,%	2010	2010,%			
Total households			14,325	100.0%	32,749	100.0%			
Family Households			11,811	82.5%	26,033	79.5%			
Husband-wife w/children			5,868	41.0%	11,365	34.7%			
Female head, no husband, w/children			720	5.0%	2,329	7.1%			
Male head, no wife, w/children			260	1.8%	955	2.9%			
Without children			4,963	34.6%	11,384	34.8%			
Nonfamily households			2,514	17.5%	6,716	20.5%			
Living alone			2,050	14.3%	5,208	15.9%			
Other nonfamily			464	3.2%	1,508	4.6%	Source: US Census 2010, 2000		
L. Household Type by Race and Ethnicity, 2010			White, NH	Black	Asian	Hispanic	Total		
Total households			21,199	1,834	2,531	6,359	32,749		
Husband-wife family			61.8%	57.2%	70.2%	65.4%	62.8%		
Family with male head, no wife			4.3%	6.4%	5.0%	6.7%	5.0%		
Family with female head, no husband			10.1%	18.0%	12.9%	14.1%	11.6%		
Living alone			19.0%	14.4%	8.5%	9.2%	15.9%	Source: US	
Other nonfamily			4.8%	3.9%	3.4%	4.5%	4.6%	Census 2010	
M. Poverty, 2005-09							California		
<i>Percentage of families and people whose income in the past 12 months is below the poverty level</i>									
All families							4.3%	9.8%	
Families w/ related children under 18 years							5.6%	14.5%	
Families w/ female householder, no husband present							15.3%	24.2%	
Families w/ female householder, no husband present w/ related children under 18 years							18.1%	32.2%	
All people							5.6%	13.2%	
Under 18 years							6.3%	18.3%	
18 to 64 years							5.3%	11.9%	
65 years and over							5.5%	8.4%	
N. Educational Attainment, 2005-09			% at each level of educational attainment						
			White, NH	Black	Asian	Hispanic	Total		
Population 25 years and over			33,790	2,736	5,671	11,692	55,387		
Less than high school			4.2%	5.9%	12.8%	21.1%	8.9%		
High school graduate (includes equivalency)			24.1%	19.5%	15.7%	30.7%	24.5%		
Some college or associate's degree			41.7%	39.7%	30.2%	34.1%	38.6%		
Bachelor's degree or higher			30.0%	34.9%	41.3%	14.1%	27.9%		
O. Employment Status, 2010-11			2010	June 2011					
In civilian labor force			27,100	26,700					
Employed			24,500	24,200					
Unemployed, % of labor force			9.8%	9.6%	Source: CA Employment Development Department				
P. Occupation, 2005-09			Estimate		Percent				
Civilian employed population, 16 yrs & over			40,575		100.0%				
Management, professional, and related occupations			14,000		34.5%				
Service occupations			7,206		17.8%				
Sales and office occupations			11,681		28.8%				
Farming, fishing, and forestry occupations			28		0.1%				
Construction, extraction, maintenance, and repair occupations			3,721		9.2%				
Production, transportation, and material moving occupations			3,939		9.7%				
Q. Class of Worker, 2005-09			Estimate		Percent				
Civilian employed population, 16 yrs & over			40,575		100.0%				
Private, for profit, wage and salary employee			26,814		66.1%				
Private, not for profit, wage and salary employee			1,512		3.7%				
Private, for profit, wage and salary self-employed in own business			1,983		4.9%				
Government workers			6,693		16.5%				
Self-employed in own not incorporated business			3,418		8.4%				
Unpaid family workers in family business			155		0.4%				

Source: American Community Survey 2005-09, unless otherwise stated

ProfileTemplate 9-8-11 (ver: 9/12/2011 16:46

Note: In the American Community Survey and for US Census variables other than population, Hispanic origin is not broken out for all races. White, NH represents White, Non-Hispanic. Black and Asian are Hispanic inclusive.